

HOME ENERGY UPDATE

Presented by Amber Beardshall -
Home Energy Reduction Officer
6th June 2024

Contents

- Recent Home Energy Highlights
- HUG2 Update
- HUG2 FY1 & progress into FY2

Funding



Department for
Energy Security
& Net Zero

Initial HUG2 funding £11.9M



ACTION ON ENERGY

The CERP (Cambridgeshire Energy Retrofit Partnership) delivery vehicle. CERP members operate an inter-authority agreement to enable us to work together to bid for funding and deliver schemes throughout Cambridgeshire.



OUR CORPORATE PLAN

Improving housing

Do, Enable and Encourage - Facilitating access to schemes

Forward thinking economic growth

Enable - guidance on retrofit, not just for homes but for businesses.

Lowering CO2 emissions

Do, Enable and Encourage - by offering guidance and leading by example



HOME ENERGY

'IMPROVING THE QUALITY OF LIFE FOR LOCAL PEOPLE'

HUNTINGDONSHIRE DISTRICT COUNCIL - CORPORATE PLAN 2023 -2028

Local person A

Those that can help themselves - **Self Funded**
They may need a guide, a document that outlines what retrofit is and how the measures will help them save money.

Local person B

Those who need some reassurance and access to schemes -Able to access funding, asking "Is this scheme legitimate?"

Local person C

Our **most vulnerable residents** - Who may need more hands on assistance, from filling in forms to communicating with contractors. Residents we may need to "locate"

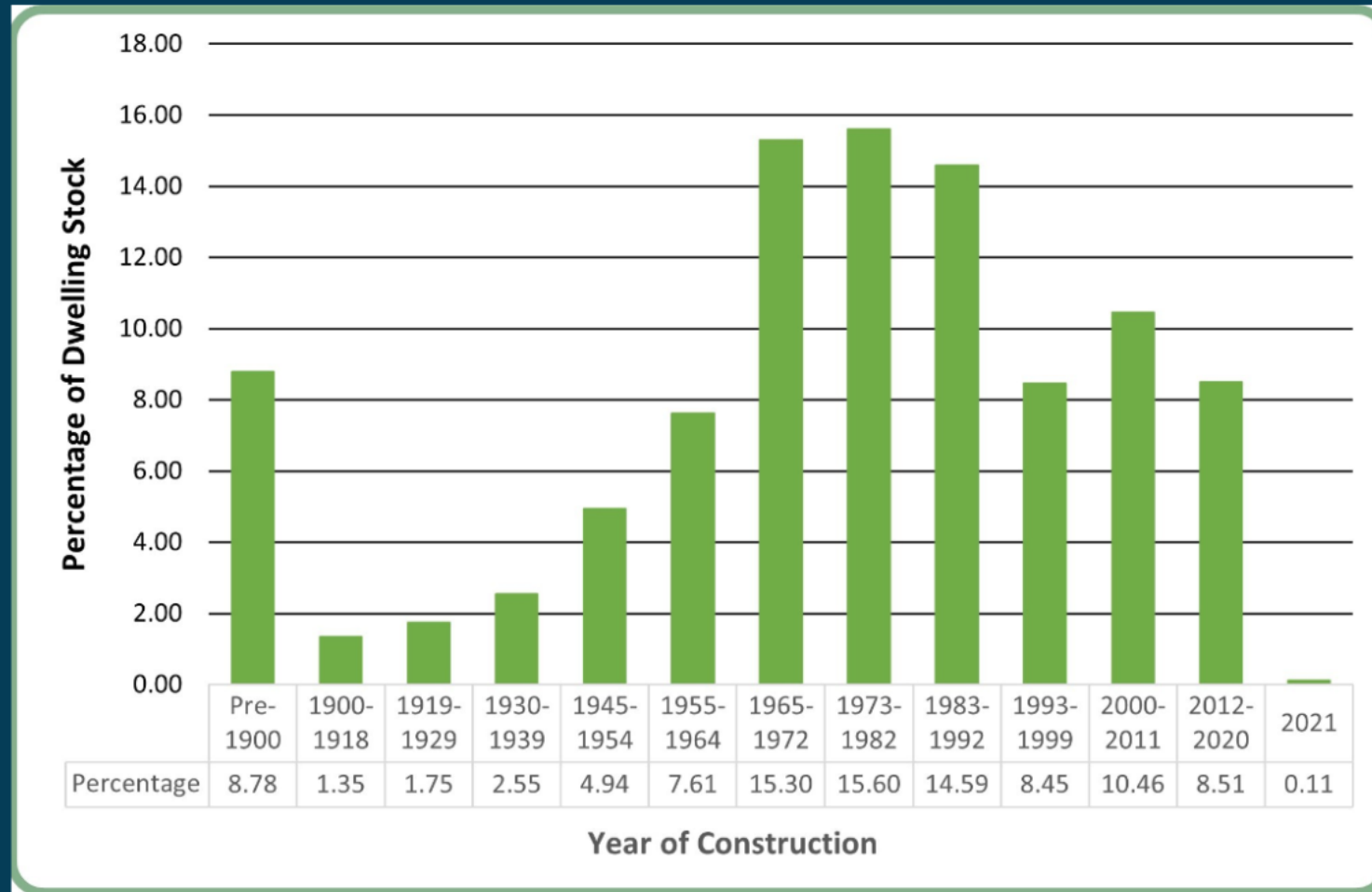


The most recent data available and shows that within Huntingdonshire fuel poverty affects **10.95% of households overall**. With the increase in fuel prices since 2022 and uncertainty over future prices and supply, it is anticipated that a greater proportion of households will now be in fuel poverty.

The highest levels of fuel poverty in Huntingdonshire at 21% and 22% are experienced in the following areas:

- **Thongsley**
- **Norfolk Road/Nene Road areas of the Oxmoor estate in Huntingdon**
- **Great Raveley**
- **Woodwalton**

Homes built since 2000 typically included insulation in the cavity walls, double glazed windows, and deeper roof insulation.; however this accounts for only 19% of the district's homes and the **vast majority will still need some level of retrofitting of energy efficiency measures for us to meet our NET ZERO ambitions.**



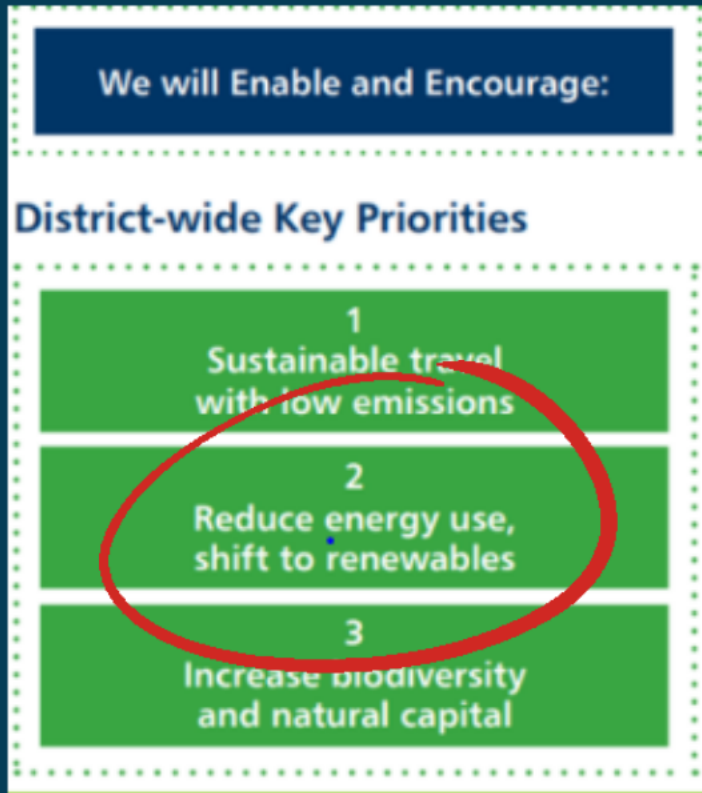
Our Climate Strategy

Retrofitting has enormous potential and could play a central role in helping us achieve net zero.

With so much demand on the built environment to develop more infrastructure and yet equal pressure to address its impact on the climate emergency,

Our ageing housing stock could (and should) be seen as an opportunity, not a thorn in our side.

Retrofitting provides a more sustainable alternative to redevelopment, taking into account “Embodied Carbon” both in the short and long-term. And with our net zero carbon targets fast approaching, it’s an option we should all be considering.



RESIDENTIAL HOMES ARE RESPONSIBLE FOR ALMOST 20% OF ALL CARBON EMISSIONS.

Highlights January 24 - April 24

JANUARY

- **Home Energy Coffee Morning Event** - dates secured. A collaboration with PECT, CAB and Huntingdon Library.
- Work commenced on **The Retrofit Guide** - a simple guide for our residents to turn to when they enquire about retrofit.

FEBRUARY

- Local Area Energy Plan - Brief note incl contributions agreed (£10k hdc)
- **LAEP Report** for Informal Cabinet produced.

MARCH

- First ECO4 FLEX Declarations made to OFGEM
- Our first **Home Energy Coffee Morning** at Huntingdon Library, supported by CAB and PECT. We met with over 30 residents to discuss their home energy concerns and we were able to sign post where necessary.

APRIL

- **First site visit to see residents completed install - ASHP and SPV**
- Marketing for off-gas villages to include new case study
- Pidley Eco Fair booked for June.
- **HUG2 income cap lifted by DESNZ**, new comms to reflect this generated + website updated.
- FY1 figures finalised - **DESNZ delivery target exceeded** for the Cambridgeshire Energy Retrofit Partnership.

Highlights Summary

Our Retrofit Guide - For the Climate HUB!

I am working with REED ENVIRONMENT to support a Local Assessors Journey to becoming "TrustMark" Registered, as of this moment, our guide cannot be completed due to lack of local assessors - unable to sign post residents.



TRUSTMARK
Government Endorsed Quality

SCAM ME

The most important thing about the plan is that it does not have to all be done at once, but it identifies the work that needs to be done over time.



Getting Started With RetroFit

Huntingdonshire
2024/25

Huntingdonshire DISTRICT COUNCIL



HOMES UPGRADE GRANT (HUG)

A government funded Retrofit scheme, making a difference locally!

WHAT IS HUG AND ARE YOU ELIGIBLE?

Are you an owner-occupier or private renter living in an off-gas grid, low energy efficiency home (EPC D or below)?

If you are, you may be eligible to benefit from a government-backed home retrofit scheme designed to improve the warmth of your home and possibly even cut your energy bills.

Local residents have already benefitted from the Home Upgrade Grant and are now living in cosy homes with reduced bills.

Check your eligibility by visiting www.actiononenergy.com/uk or scan the QR code below.

If you have any questions about HUG or require home energy support, please email homeenergy@huntingdonshire.gov.uk

Local Installations

Below is an installation recently completed in Fildley

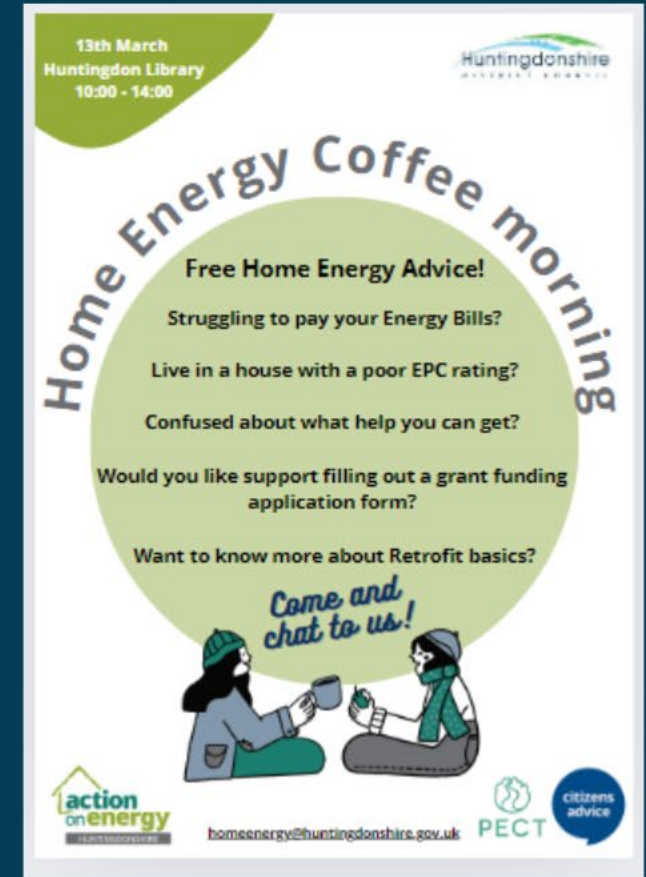
Challenges	Benefits
<ul style="list-style-type: none">Expensive, inefficient electric heaters.Coal fire as main heat source, resulting in dangerous trips to the coal store in the garden on icy winter mornings.One-level property, draughty and expensive to heat.	<ul style="list-style-type: none">New radiators in every roomASHP which provides steady consistent warmth throughout.Solar Power panels installed, with simple to use app, allowing resident to see her usage and savings.

"I was so happy to return home from Hospital to a warm home, it wasn't a fast process but it was truly worth it, it has made such a big difference to my life and I love the Solar App, which shows me how much money I am saving."

"Hopefully more people will check to see if they can benefit too!"

Scan to check eligibility

Our Home Energy Coffee Morning!



13th March
Huntingdon Library
10:00 - 14:00

Home Energy Coffee morning

Free Home Energy Advice!

- Struggling to pay your Energy Bills?
- Live in a house with a poor EPC rating?
- Confused about what help you can get?
- Would you like support filling out a grant funding application form?
- Want to know more about Retrofit basics?

Come and chat to us!

homeenergy@huntingdonshire.gov.uk

action on energy, PECT, citizens advice

Completed Resident Install

HUG2 FY1 Review

Total properties within Cambridgeshire - 89

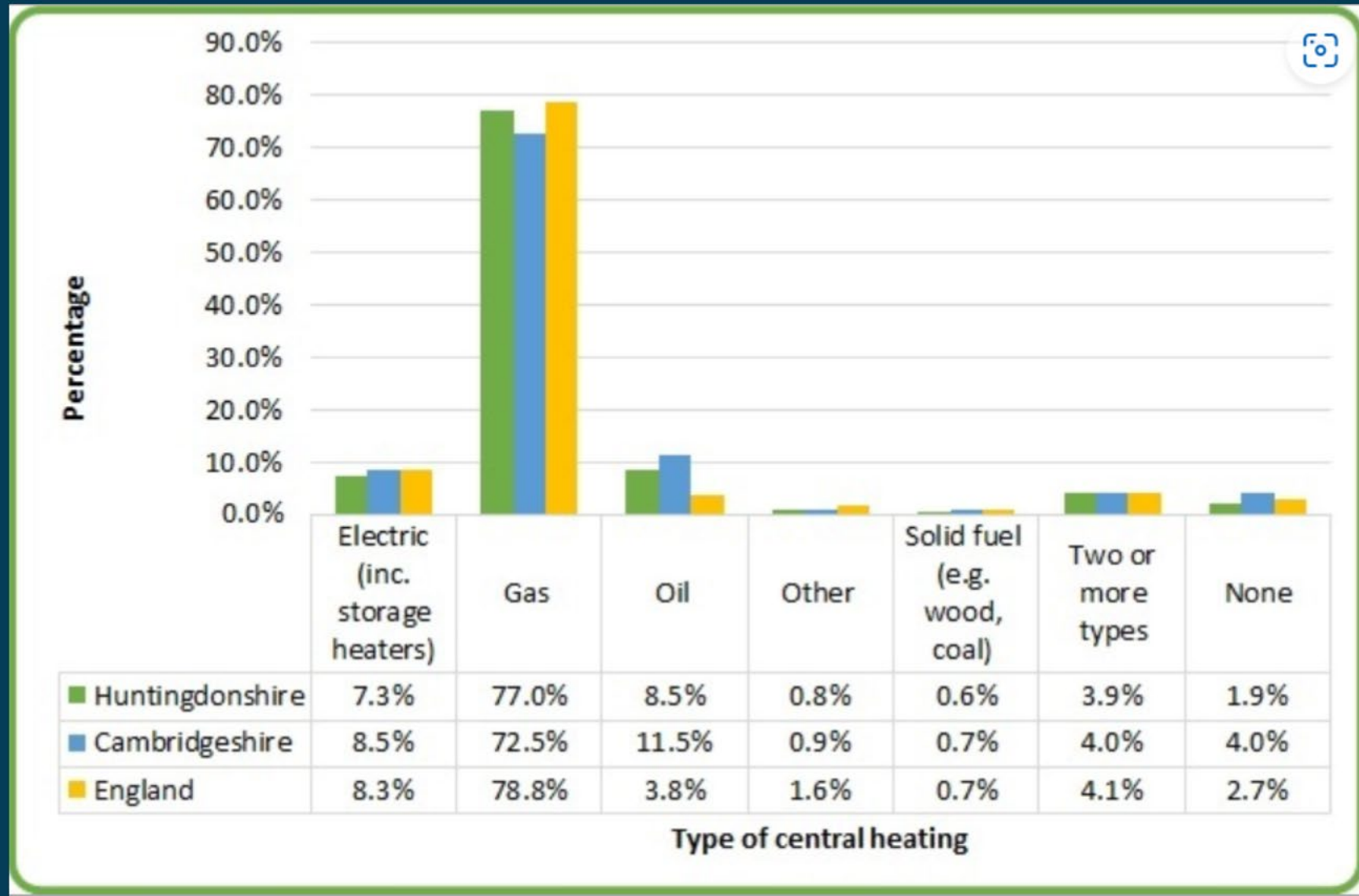
Total properties within our district - 7

Total number of measures installed within Cambridgeshire -243

The National Picture

The HUG2 programme had installed 782 measures across 243 households throughout the UK according to the latest ADEPT report.

TYPES OF CENTRAL HEATING ACROSS HUNTINGDONSHIRE (ONS 2011 CENSUS)



HUG2 progress into FY2

- Increased household income threshold from **£34k to £36k**. All applications previously rejected due to income exceeding the previous limit will be reassessed under the new threshold. Eligible households will be contacted to progress their applications.
- Simplified the per home cost cap structure
- High Retention Storage heaters to be listed as a grade B measure for electric heated flats.

New Projected forecast of total number of homes to be upgraded	355
New estimated Capital cost of project	£6,390,000
New estimated Admin and Ancillary cost of project	£958,500
New estimated total cost of project	£7,348,500

Future Energy Schemes

A faint, stylized illustration in the background shows two people, a man and a woman, holding a large globe of the Earth. The man is on the left, and the woman is on the right. They are both looking towards the globe. The globe is a light blue color, and the people are rendered in a simple, line-art style.

The Local Authority Retrofit Accelerator Scheme

As part of CERP, we have supported the bid to participate in the LARA, a pilot project which will aim to set up local delivery groups, which will aim to turn the plan into substantive action, working with local supply chains, businesses, colleges and installers. For more information about this pilot, please visit www.mcsfoundation.org.uk

Local Authority Retrofit Scheme

The LARS - £500 million is being made available for local authorities across England as part of a new local authority retrofit scheme. This funding is expected to be delivered from **2025-2028**. Whilst the scope of the new local authority retrofit scheme is subject to final policy design and cross-government agreement. We will release the eligibility criteria in due course, but we expect the scheme to focus on private, low-income households living in EPC D-G homes in England, **both on and off the gas grid.**

Find out more about HUG2 and ECO4 Flex schemes, visit our new Climate Hub!

SCAN ME



Or visit www.letstalkhuntingdonshire.net

